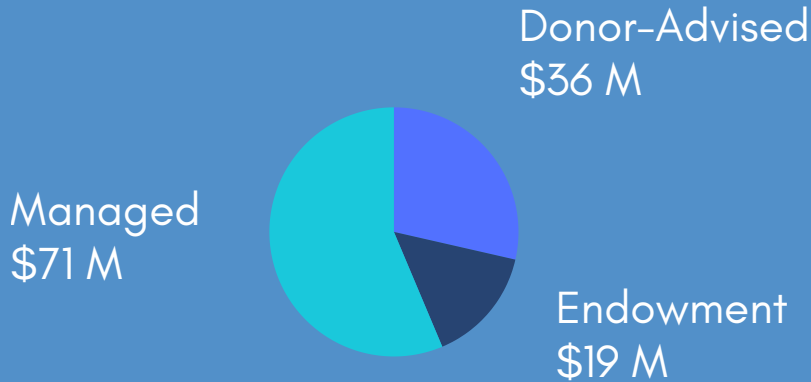


ASSETS UNDER MANAGEMENT

as of 12/31/2025



TOP serves donors and nonprofit organizations in small Jewish communities in Florida and nationwide

OUR APPROACH



Total assets under management, including \$8.1 M in Israel Bonds as of 12/31/2025.



Strict anti-terror, anti-BDS, and pro-Israel investment policy



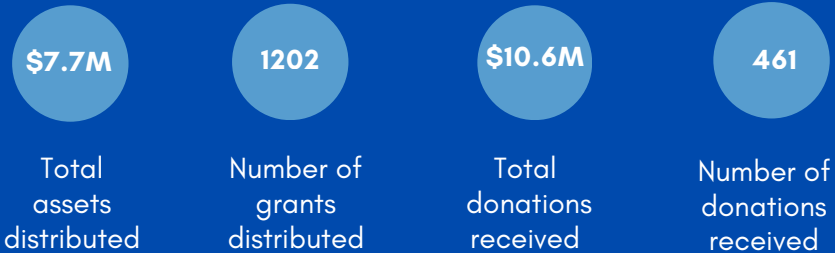
5 investment pools to choose from, managed by Goldman Sachs



Exceptional service and creative solutions

TOP IMPACT

fiscal year end 12/31/2025

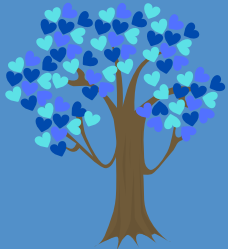


OUR MISSION



We secure the future of our community by using Jewish-inspired values, innovative philanthropy, and extraordinary service.

OUR VISION



A vibrant, thriving Jewish community – today and tomorrow.

WE MAKE GIVING EASIER.

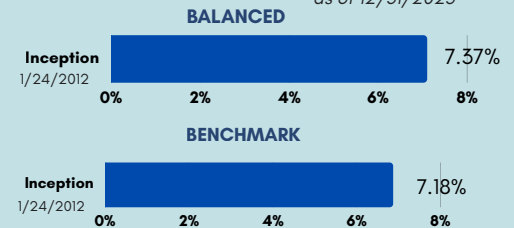
PARTNER ORGANIZATIONS



TOP has 48 partner organizations, including 8 Federations, Jewish agencies, day schools, senior residences, and synagogues

INVESTMENT PERFORMANCE

as of 12/31/2025



*performance shown reflects the balanced investment pool, net of fees excluding Israel Bonds

Ellen Weiss, Executive Director
phone: 813.769.4785
ellen@topjewishfoundation.org

www.topjewishfoundation.org